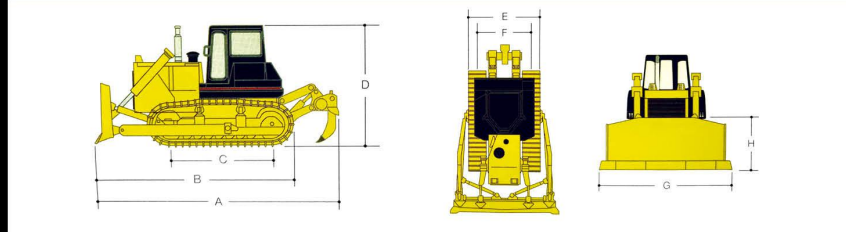


► **Dimension**

型号 Model		HD16	HD22	HD32
A 整机长度 (含松土器) Overall Length(with ripper)	mm	6104	6790	8650
B 整机长度 (不含松土器) Overall Length(without ripper)	mm	5140	5460	6880
C 接地长度 Length of Track on Ground	mm	2430	2730	3150
D 高度 Overall Height	mm	3032	3395	3725
E 宽度 (不含铲刀) Overall Width(no blade)	mm	2390	2560	2700
F 履带中心距 Track Gauge	mm	1880	2000	2140
G 铲刀宽度 Blade Width	mm	3388	3725	4130
H 铲刀高度 Blade Height	mm	1150	1317	1592



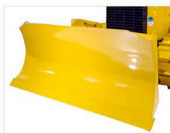
► **Option**



Cabin with ROPS & FOPS



Cabin with ROPS



Angle blade



Sanitation blade



U Blade



Three shank ripper



Single shank ripper



Winch



BULLDOZERS

公司简介 Corporate Overview

济宁海推重工科技有限公司成立于 2010 年，是一家集研发、制造、销售为一体的国内领先的建筑设备制造商，主要生产销售推土机，轮式挖掘机和装载机等建筑机械。

海推工厂位于山东省济宁市经济开发区，占地面积约 40000 平方米，现有员工 100 多人。新工厂由配件仓库，锻造车间，装配车间，检测区和办公楼组成。年生产能力可达 2000 台，以满足国内和国际市场的需求。

在海推研发团队的强大技术支持下，海推机械严格按照国际质量和安全标准制造，可以应对最极端的气候条件和复杂的地形。一年或 2000 小时的长期保修和优质的售后服务给客户最好的体验。

如今，我们的产品远销全球 50 多个国家和地区。

Shandong Haitui Heavy Industry Machinery Co.,Ltd established since 2010,is a leading manufacturer of construction equipment,offers machinery including bulldozers,wheel excavators and loaders unparalleled in price,quality and performance.

Haitui machinery factory located in economic and development zone,Jining city,Shandong province.It covers around 40000m² and have more than 100 workers.The new plant composed by spare parts area,forging workshop,assembly workshop,testing area and office building.The annual production capacity can reach 2000 units machineries to meet the demand of domestic and internation market.

With the strong technical support of Haitui Research & Development team,Haitui machinery is manufactured with international standard of quality and safety to withstand even the most extreme climatic conditions and rugged terrains.One year or 2000 hours long time warranty and excellent after-sales service ensure the nice experience.

Today the company's clients spans over 50 countries



产品简介 Products Overview

海推系列推土机采用国际先进的履带式推土机生产技术，并对关键部件和工艺进行了升级，以更好地满足用户需求。经过多年的研发和测试，我们已经逐步完善了推土机各类细节，使其能够达到完美的地面保持能力和通过粗糙地形的优越的机动性能。

海推推土机主要适用于公路，铁路，矿山，机场等地面的推运、开挖、回填土石方以及其他散料作业，是国防工程、矿山建设、城乡道路等建筑施工和水利建设等不可缺少的机械设备。

可靠的潍柴和康明斯发动机以卓越的燃油效率提供出色强劲的动力。加强的台车架和底盘系统可以克服最崎岖的地形和障碍物。

海推推土机是严格按照国际安全和环保标准生产制造，大大减少了对环境的污染。

Haitui range of bulldozers adopts the international advanced crawler bulldozer production technology, and upgraded on key components and processes to better meet users needs.Through years of research and tested,we have perfected the finer details of our bulldozers by achieving excellent ground holding capability and superior mobility through rough terrains.

Haitui bulldozers mainly applied to the push, excavation, backfilling earthwork and other bulk materials operations of roads, railways, mines, airports, etc. It is an indispensable equipment for national defense engineering, mining construction, urban and rural road construction and water conservancy construction.

Reliable Weichai and Cummins engine produce outstanding power with superior fuel efficiency.Strengthened chassis frame and undercarriage built to seamlessly overcome the most rugged terrains and obstacles.

Haitui bulldozers are manufactured according to international safety and environmental standards,that reduces environmental pollution.



HD16 Hydraulic Crawler Bulldozer

- 发动机型号 Engine: Weichai WD10G178E25
- 额定功率 Rated Power: 131 kW/1850 rpm
- 操作重量 Operating Weight: 17 ton



产品性能 Main Features

- 搭配潍柴发动机，动力强劲，易于维护，具备燃烧效率高等优点。
- 变速箱采用行星齿轮结构，通过操纵液压控制阀来实现前进、后退及各种变速。结构形式为行星齿轮，多片离合器，液压结合强制润滑式，共分前进三档和后退三档。
- 全箱型结构的主机架采用钢板焊接全箱型整体式结构，与后桥箱焊接为一体，具备较高的承载冲击载荷和抗弯扭的能力，高质量焊缝确保主机架具有全寿命周期。
- 主流的 14MPa 工作液压系统，工作稳定，具有过载保护功能，可大幅减少液压元器件的故障率。
- Weichai WD10G178E25 engine gives you more power and reliability you need. Improved fuel economy over the previous model with strong torque output and low fuel consumption gives you excellent overall fluid efficiency.
- The gearbox uses a planetary gear structure that operates the hydraulic control valve to achieve forward, reverse and various shifts. The structure is planetary gear, multi-plate clutch, hydraulic combined with forced lubrication, which is divided into three forward and three reverse.
- The main frame of the full box structure adopts steel plate welded full box type integral structure, which is welded with the rear axle box. It has high impact load bearing capacity and resistance to bending and twisting. High quality weld seam ensures the main frame has a full life cycle.
- Mainstream 14MPa working hydraulic system, can greatly reduce the failure rate of hydraulic components with overload protection function.

技术参数 Technical Parameters

整机 Overall	尺寸 Dimension	5140 × 3388 × 3032 mm		
	操作重量 Operating Weight	17000 kg		
发动机 ENGINE	型号 Model	Weichai WD10G178E25 / WP10G178E355		
	类型 Type	水冷，直列，4 冲程，直接喷射 Water-cooled, in-line, 4-stroke, direct injection		
	缸数 Number of Cylinders	6		
	缸径 × 行程 Bore × Stroke	Φ 126 × 130 mm		
	排量 Piston Displacement	9.726 L		
	额定功率 Rated Power	131 kW (178HP) @1850 rpm		
	最大扭矩 Max Torque	765 N · m @1300 rpm		
变速系统 TRANSMISSION	最小耗油量 Fuel Consumption	214 g/kW · h		
	液力变矩器 Torque Converter	单级单档三元件 3-element, 1 stage, 1 phase		
	变速箱 Transmission	行星齿轮型、动力换挡、强制润滑 Planetary gear type, power-shift, forced lubrication		
	中央传动 Central Drive Shaft	螺旋锥齿轮、一级减速、飞溅润滑、单级减速 Spiral bevel gear, single-stage speed reduction, splash lubrication		
	转向离合器 Steering clutch	湿式、多片、弹簧压紧、液压分离、液压操纵 Wet, multi-disc, spring loaded, hydraulically separated, hydraulic control		
	转向制动器 Steering brake	湿式、浮动式、直接操纵、液压联动 Wet type, floating band structure, foot brake with hydraulic booster		
	终传动 Final drive	直齿二级减速、飞溅润滑式 2-stage speed reduction of spur gear, splash lubrication		
速度 TRAVEL SPEED	档位 Gear	1st	2nd	3rd
	前进 Forward	0~3.29 km/h	0~5.82 km/h	0~9.63 km/h
底盘系统 UNDERCARRIAGE SYSTEM	后退 Reverse	0~4.28 km/h	0~7.59 km/h	0~12.53 km/h
	类型 Type	八字梁摆动式，平衡梁悬挂结构 Sprayed beam, suspended structure of equalizer		
	托轮数量 No. of Carrier Rollers	2 each side		
	支重轮数量 No. of Track Rollers	6 each side		
	履带板数量 No. of Track Shoes	37 each side		
	履带板类型 Track Shoe type	装配式单履齿 Single Grouser		
	履带板宽度 Width of Track shoe	510 mm		
	链轨节距 Pitch	203.2 mm		
液压系统 HYDRAULIC SYSTEM	履带中心距 Track Gauge	1880 mm		
	接地比压 Ground Pressure	0.067 Mpa		
	最高工作压力 Max Pressure	14 Mpa		
	油泵类型 Pump Type	Gear Pump		
铲刀 BLADE	流量 Displacement	243 L/Min		
	工作油缸内径 × 数量 Bore of Working Cylinder	110 mm × 2		
	铲刀类型 Blade Type	直倾铲 Straight-tilt Blade	角铲 Angle Blade	半 U 铲 Semi-U-blade
	铲刀容量 Blade Capacity	4.5 m³	4.3 m³	5 m³
	铲刀宽度 Blade Width	3388 mm	3970 mm	3556 mm
	铲刀高度 Blade Height	1150 mm	1040 mm	1120 mm
	最大铲土深度 Max Drop Below Ground	540 mm	540 mm	530 mm
三齿松土器 THREE SHANK RIPPER	最大倾斜 Max Tilt Adjustment	400 mm	-	400 mm
	最大松土深度 Max digging depth	572 mm		
	最大离地提升高度 Max lift above ground	592 mm		
	重量 Weight of 3-shank ripper	1667 kg		

HD22 Hydraulic Crawler Bulldozer



- 发动机型号 Engine: Cummins NT855-C280S10
- 额定功率 Rated Power: 175 kW/1800 rpm
- 操作重量 Operating Weight: 23.5 ton

产品性能 Main Features

- 搭配康明斯发动机，动力强劲，高效节能，符合国 III 排放标准。
- 高可靠性的动力换挡变速箱，稳定的液力变矩器，二级直齿结构的终传动，均可高效的传输动力。
- 可实现故障自动诊断、全程监控。整体铸塑仪表盘集空调、电器、仪表为一体，更加美观高档。
- 半刚性悬挂行走系统，增大履带的接地面积，提高车辆的牵引力。
- 按照人体工程学设计，驾驶座椅和扶手可以上下前后调节，变速、转向和油门操纵置于左侧，并采用软轴结构，工作装置操纵置于右侧，采用伺服操纵系统，使操纵过程更加轻便灵活，减轻疲劳。
- A CUMMINS NT855-C280S10 engine gives you more power and reliability you need. Improved fuel economy over the previous model with strong torque output and low fuel consumption gives you excellent overall fluid efficiency.
- The highly reliable power shift transmission, stable torque converter and the two-stage straight-tooth structure's final drive can transmit power efficiently.
- It can realize automatic fault diagnosis and full monitoring. The overall cast instrument panel integrates air conditioning, electrical appliances and instruments into one, which is more convenient and luxury.
- According to the ergonomic design, the driver's seat and armrest can be adjusted up and down, the shifting, steering and throttle are placed on the left side, and the soft shaft structure is adopted. The working device is operated on the right side, and the servo control system is used to make the operation process more light and flexible.

技术参数 Technical Parameters

整机 Overall	尺寸 Dimension	5460 × 3725 × 3395 mm		
	操作重量 Operating Weight	23500 kg		
发动机 ENGINE	型号 Model	Cummins NT855-C280S10 / QSNT-C235		
	类型 Type	水冷，直列式，顶置气门直喷，涡轮增压，柴油 Water-cooled, in-line, overhead valve direct injection, turbocharged diesel		
	缸数 Number of Cylinders	6		
	缸径 × 行程 Bore × Stroke	Φ139.7 × 152.4 mm		
	排量 Piston Displacement	14.01 L		
	额定功率 Rated Power	175 KW (238HP) @1800 rpm		
	最大扭矩 Max Torque	1030 N · m @1300 rpm		
变速系统 TRANSMISSION	液力变矩器 Torque Converter	单级单相三元件 3-element, 1 stage, 1 phase		
	变速箱 Transmission	行星齿轮型、动力换挡、强制润滑 Planetary gear type, power-shift, forced lubrication		
	中央传动 Central Drive Shaft	螺旋锥齿轮、一级减速、飞溅润滑、单级减速 Spiral bevel gear, single-stage speed reduction, splash lubrication		
	转向离合器 Steering clutch	湿式、多片、弹簧压紧、液压分离、液压操纵 Wet, multi-disc, spring loaded, hydraulically separated, hydraulic control		
	转向制动器 Steering brake	湿式、浮动式、直接操纵、液压联动 Wet type, floating band structure, foot brake with hydraulic booster		
	终传动 Final drive	直齿二级减速、飞溅润滑式 2-stage speed reduction of spur gear, splash lubrication		
速度 TRAVEL SPEED	档位 Gear	1st	2nd	3rd
	前进 Forward	0~3.6 km/h	0~6.5 km/h	0~11.2 km/h
	后退 Reverse	0~4.3 km/h	0~7.7 km/h	0~13.2 km/h
底盘系统 UNDERCARRIAGE SYSTEM	类型 Type	八字梁摆动式，平衡梁悬挂结构 Sprayed beam, suspended structure of equalizer		
	托轮数量 No. of Carrier Rollers	2 each side		
	支重轮数量 No. of Track Rollers	6 each side		
	履带板数量 No. of Track Shoes	38 each side		
	履带板类型 Track Shoe type	装配式单履齿 Single Grouser		
	履带板宽度 Width of Track shoe	560 mm		
	链轨节距 Pitch	216 mm		
液压系统 HYDRAULIC SYSTEM	最高工作压力 Max Pressure	14 Mpa		
	油泵类型 Pump Type	齿轮泵 Gear Pump		
	流量 Displacement	262 L/Min		
	工作油缸内径 × 数量 Bore of Working Cylinder	120 mm × 2		
铲刀 BLADE	铲刀类型 Blade Type	直倾铲 Straight-tilt Blade	角铲 Angle Blade	半 U 铲 Semi-U-blade
	铲刀容量 Blade Capacity	6.4 m³	4.7 m³	7.5 m³
	铲刀宽度 Blade Width	3725 mm	4365 mm	3725 mm
	铲刀高度 Blade Height	1315 mm	1055 mm	1374 mm
	最大铲土深度 Max Drop Below Ground	538 mm	535 mm	540 mm
	最大倾角 Max Tilt Adjustment	>735 mm	>500 mm	>755 mm
三齿松土器 THREE SHANK RIPPER	最大松土深度 Max digging depth	666 mm		
	最大离地提升高度 Max lift above ground	555 mm		
	重量 Weight of 3-shank ripper	2495 kg		
单齿松土器 SINGLE SHANK RIPPER	最大松土深度 Max digging depth	695 mm		
	最大离地提升高度 Max lift above ground	515 mm		
	重量 Weight of 1-shank ripper	2453 kg		

HD32 Hydraulic Crawler Bulldozer



- 发动机型号 Engine: Cummins NTA855-C360S10
- 额定功率 Rated Power: 257 kW/1800 rpm
- 操作重量 Operating Weight: 37.2 ton

产品性能 Main Features

- 搭配康明斯 NTA855-C360S10 发动机，动力强劲，高效节能；带有废气涡轮增压器，在海拔 4300 米的高原仍能正常工作。
- 高可靠性的动力换挡变速箱，稳定的液力变矩器，二级直齿结构的终传动，均可高效的传输动力。
- 具有独立的发动机冷却水箱，底盘油冷却器，提供了卓越的冷却性能和简易的保养操作，可确保机器连续作业。
- 终传动低位驱动，可提供更加强大的驱动力和高效的爬坡能力。
- 标配的直倾推土铲具有强大的切削力，大型单齿松土器具有可调节的入土角，可用于粘土、硬化的冻土等土层的疏松，还可用于砾石、板结的盐矿等较坚硬作业面的剥离
- A CUMMINS NTA855-C360S10 engine gives you more power and reliability you need. With exhaust turbocharger, it can still work normally at altitude of 4,300 meters.
- The highly reliable power shift transmission, stable torque converter and the two-stage straight-tooth structure final drive transmit power efficiently.
- With independent engine cooling water tank, chassis oil cooler, water and air intercooler provides excellent cooling performance and simple maintenance operation to ensure continuous operation of the machine.
- The final drive is driven low and provides more powerful driving force and efficient gradeability.
- The standard straight tilt blade features powerful cutting force and the heavy single-shank ripper can be equipped for the ripping of clay and frozen earth, featuring high working efficiency and super-strong penetrating force.

技术参数 Technical Parameters

整机 Overall	尺寸 Dimension	6880 × 4130 × 3725 mm		
	操作重量 Operating Weight	37200 kg		
发动机 ENGINE	型号 Model	Cummins NTA855-C360S10 / QSNT-C345S30		
	类型 Type	水冷，直列式，顶置气门直喷，涡轮增压，柴油 Water-cooled, in-line, overhead valve direct injection, turbocharged diesel		
	缸数 Number of Cylinders	6		
	缸径 × 行程 Bore × Stroke	Φ139.7 × 152.4 mm		
	排量 Piston Displacement	14.01 L		
	额定功率 Rated Power	257 KW (238HP) @2000 rpm		
	最大扭矩 Max Torque	1440 N · m @1400 rpm		
变速系统 TRANSMISSION	液力变矩器 Torque Converter	单级单档三元件 3-element, 1 stage, 1 phase		
	变速箱 Transmission	行星齿轮型、动力换挡、强制润滑 Planetary gear type, power-shift, forced lubrication		
	中央传动 Central Drive Shaft	螺旋锥齿轮、一级减速、飞溅润滑、单级减速 Spiral bevel gear, single-stage speed reduction, splash lubrication		
	转向离合器 Steering clutch	湿式、多片、弹簧压紧、液压分离、液压操纵 Wet, multi-disc, spring loaded, hydraulically separated, hydraulic control		
	转向制动器 Steering brake	湿式、浮动式、直接操纵、液压联动 Wet type, floating band structure, foot brake with hydraulic booster		
	终传动 Final drive	直齿二级减速、飞溅润滑式 2-stage speed reduction of spur gear, splash lubrication		
速度 TRAVEL SPEED	档位 Gear	1st	2nd	3rd
	前进 Forward	0~3.6 km/h	0~6.6 km/h	0~11.5 km/h
底盘系统 UNDERCARRIAGE SYSTEM	后退 Reverse	0~4.4 km/h	0~7.8 km/h	0~13.5 km/h
	类型 Type	八字梁摆动式，平衡梁悬挂结构 Sprayed beam, suspended structure of equalizer		
	托轮数量 No. of Carrier Rollers	2 each side		
	支重轮数量 No. of Track Rollers	7 each side		
	履带板数量 No. of Track Shoes	41 each side		
	履带板类型 Track Shoe type	装配式单履带 Single Grouser		
	履带板宽度 Width of Track shoe	560 mm		
	链轨节距 Pitch	228.6 mm		
	履带中心距 Track Gauge	2140 mm		
液压系统 HYDRAULIC SYSTEM	接地比压 Ground Pressure	0.105 Mpa		
	最高工作油压 Max Pressure	14 Mpa		
	油泵类型 Pump Type	齿轮泵 Gear Pump		
	流量 Displacement	355 L/Min		
铲刀 BLADE	工作油缸内径 × 数量 Bore of Working Cylinder	140 mm × 2		
	铲刀类型 Blade Type	直倾铲 Straight-tilt Blade	角铲 Angle Blade	半 U 铲 Semi-U-blade
	铲刀容量 Blade Capacity	10 m³	6 m³	11.9 m³
	铲刀宽度 Blade Width	4130 mm	5000 mm	4130 mm
	铲刀高度 Blade Height	1590 mm	1140 mm	1710 mm
	最大铲土深度 Max Drop Below Ground	560 mm	630 mm	560 mm
	最大倾斜 Max Tilt Adjustment	1000 mm	500 mm	1000 mm
三齿松土器 THREE SHANK RIPPER	最大松土深度 Max digging depth	842 mm		
	最大离地提升高度 Max lift above ground	883 mm		
	重量 Weight of 3-shank ripper	3802 kg		
单齿松土器 SINGLE SHANK RIPPER	最大松土深度 Max digging depth	1250 mm		
	最大离地提升高度 Max lift above ground	965 mm		
	重量 Weight of 1-shank ripper	3252 kg		

► 发动机 Engine

海推推土机配置潍柴或康明斯发动机，品质可靠，动力充足，燃烧效率高，易于保养。大品牌发动机，在全球各个国家都可享受售后服务。

Haitui bulldozers come equipped with a Weichai or Cummins series engine. These engines are purpose-built to produce high torque coupled with superior reliability, performance and more importantly, low fuel consumption. As big brand engines, they are covered under an international warranty package, users across the globe can tap on the OEM's service network conveniently.



► 变速箱 Powershift Transmission

变速箱采用行星齿轮结构，通过操纵液压控制阀来实现前进，后退及各种变速。结构形式为行星齿轮，多片离合器，液压结合强制润滑式。

The powershift transmission box is planetary gears type, by operating hydraulic control valve for traveling forward and reverse. It features planetary gears, multi-disc clutch and hydraulically applied forced lubrication.



► 变矩器 Torque Converter

变矩器是单级单相三元件向心涡轮液力变矩器，机构先进，工作可靠，与主机合理匹配，能够将发动机输出的动力高效的传输到终传动。

Based on a revolutionary 3-element, 1-stage 1-phase design, the torque converter can effortlessly transmits power from the engine to its final drive that minimizes power loss.



► 终传动 Final Drive

作为传动系统的最后一部分，终传动是推土机最重要的部件之一。我们采用日本小松技术进行热处理的二级直齿结构，完全润滑的终传动系统，具有承载能力强，传动平稳，使用寿命长等特点。

As the last part of the transmission system, the final drive is one of the most critical components of the bulldozer. We have opted for a two stage spur gear heat treated with Japan technology to withstand relentless wear and tear, and a fully lubricated final drive system for improved life in abrasive conditions.



► 驾驶室 Cabin

新型六面体驾驶室具有宽敞的内部空间和良好的视野，出色的防振性能和良好的阻尼舱，为驾驶员提供了舒适的工作环境。配置多功能显示屏，可轻松监控推土机的所有性能。

New hexahedral cab with large internal space and wide field of view, excellent vibration and well-damped cabin provides a comfortable working environment. Well-displayed instrument panel equipped for easy monitoring of all functions on board.



► 冷却系统 Cooling system

冷却系统采用闭式系统，使水箱压力保持特定值，可提高冷却水的蒸发温度及散热效率。全新加大散热器使推土机有更好的散热效果，以保证发动机能够在理想的温度下正常工作。

The closed system keeps the tank pressure at a specific value, which can increase the evaporation temperature and heat dissipation efficiency of the cooling water. An all-new enlarged radiator is designed for superior heat-dissipation, ensuring that the engine works at an ideal temperature.



► 底盘系统 Undercarriage system

底盘件是推土机中使用频率最高，最易磨损的部件，因此质量可靠、耐用的底盘件意味着能够大大降低使用成本。海推推土机使用采用日本小松热处理技术生产的四轮一带，质量稳定，结实耐用，配置独特的油链，大大的提高了底盘件的使用寿命。

The undercarriage is the most frequently worn out components on bulldozer. Therefore, a more durable undercarriage means lower running cost. Haitui bulldozers adopt Japan Komatsu heat treatment technology on this undercarriage parts and equipped with distinctive lubricated track trains, which greatly improve the service life of undercarriage system.



► 配件和服务 Parts and Service

海推公司拥有配件仓库和服务中心，能够为客户及时的提供售后和维修所需要的各种配件。我们专业的客户服务团队由经验丰富，技术娴熟的工程师和技术人员组成，确保为客户提供专业、迅速的全方位服务。

Haitui Parts and Service Centers provides a convenient channel for you to order the original spare parts. From determining the correct part number to locating and ordering, we are committed to working 24 hours for timely solutions and delivery to ensure we serve our customers promptly and efficiently.

Our dedicated team of customer service executives, skilled engineers and technicians are well-trained to ensure timely and propitious support throughout the customer life cycle.

